



sns academy

**an International CBSE Finger Print School
Coimbatore**



Name :

Date :

Grade : V

Worksheet

Submission Date :

Subject : Science

Parent's sign :

LESSON 1 - PRETTY WITH A PURPOSE

I. Choose the best answer

1. Name the tube that connects the stigma of the flower to its ovary.

- a. Filament b. Style c. Stigma d. Stalk

2. Which is the sac-like structure in a flower that holds the pollen?

- a. Anther b. Ovary c. Carpel d. Filament

3. Name the part which connects the anther to the flower

- a. Style b. Stem c. Stalk d. Filament

4. Which part of the flower develops into a fruit?

- a. Ovules b. Ovary c. Carpel d. Stamen

5. What happens during the process of fertilisation in a flowering plant?

- a. The pollen joins with the ovule. c. The sepals join with the stigma.
b. The pollen joins with the stigma. d. The style joins with the ovary.

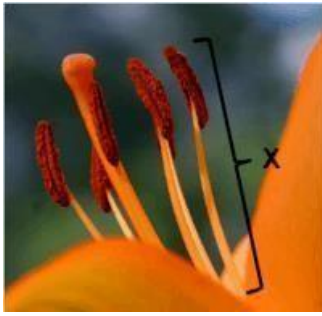
6. The sequence of the life cycle of a flowering plant is as follows.

- a. fertilization, pollination, seeds, plants b. pollination, fertilization, seeds, plants
b. seeds, plants, fertilization, pollination c. plants, pollination, seeds, fertilization

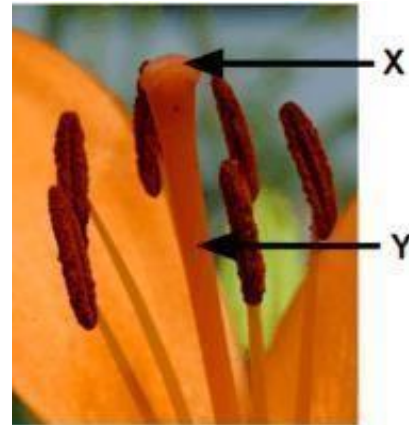
7. The flower is important to a plant because it helps in _____.

- a. attracting b. production of nectar c. pollination d. all of above

8. What is the name of the structure labeled X in the diagram?



X = _____



9. Which parts of the flower are labeled below?

X = _____

Y = _____

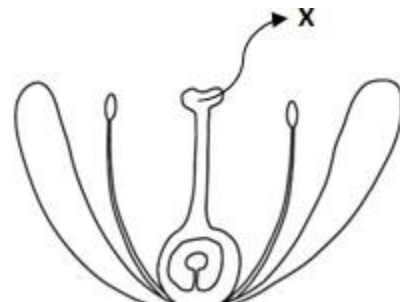
10. Why are flowers very colorful, and why do they produce fragrance?

- a. So people buy them.
- b. To make gardens look good.
- c. To attract pollinators.
- d. To attract sunlight.

11. The diagram shows the flower of a plant.

If part X is cut off, what will happen to the plant?

- a. Fertilisation will not take place.
- b. The flower withers immediately.
- c. No pollen grains will be produced.
- d. It takes a shorter time for the fruit to be produced.



II. Match the Following.

Column A	Column B
1. Bees	a. red or brown flowers with a strong foul odour
2. Flies	b. tube-like flowers
3. Moth	c. dull coloured flowers with no fragrance
4. Bats	d. light-colored flowers with a strong, sweet smell
5. Birds	e. white, fruity smell flowers which bloom at night
6. Wind	f. yellow, blue, and purple flowers